

HALF HEIGHTS

BUILT FOR HEAVY BULK LOADS NOT REQUIRING LARGE CUBIC CAPACITY

SUITABLE FOR DIVERSE CARGO TYPES

IDEAL FOR DENSE CARGOES TRANSPORTED BY THE MINING AND MINERAL BY-PRODUCT INDUSTRIES

FEATURES

Tipping hatch on front end, side hinge door discharge with swinging header

Greater side wall strength, tested to 0.6-0.8 times of payload

Safety release on hatch end and side hinge doors

Removable lid with heavy duty latches

Special corner gasket at rear door and anti-leakage steel plate on four corners

Smooth steel floors, tapered side walls and anti-corrosion lined internal walls

Easily stacked together and stored onsite

Rear doors

Strong construction

ADVANTAGES

Efficient loading and discharging

Multiple discharge options

Suitable for diverse cargo types

Added safety

Cargo is more secure

Cargo is more secure

Container is resistant to damage

Smooth discharge of product

Standard container storage

Can be used for general cargo

Stackable in pairs



TECHNICAL SPECIFICATIONS

WEIGHT

MAXIMUM GROSS WEIGHT	33,000 kg
TARE WEIGHT	3,150 kgs
MAXIMUM PAYLOAD	29,850 kgs
DISCHARGE TYPE	Tipping or Rotational

INTERNAL DIMENSIONS

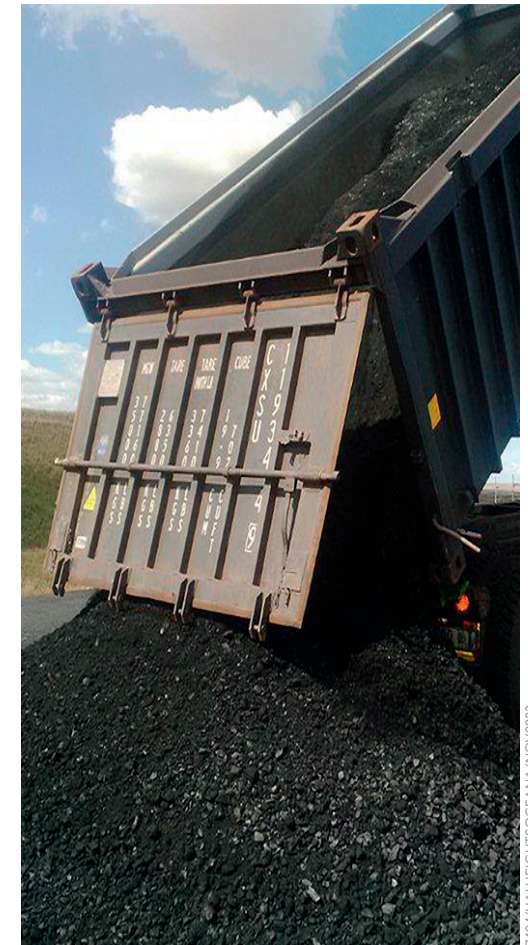
INTERNAL LENGTH	5,839 mm
INTERNAL WIDTH	2,330 mm
INTERNAL HEIGHT	1,214 mm (Under Roof)
INTERNAL CUBIC CAPACITY	15.5 m ³

EXTERNAL DIMENSIONS

EXTERNAL LENGTH	6,058 mm
EXTERNAL WIDTH	2,438 mm
EXTERNAL HEIGHT	1,450 mm

BK2 is an IMDG (International Maritime Dangerous Goods) code that redefines Bulk Containers. It differs from standard ISO in two main areas:

- End wall strength is greater, with test load of 0.6 payload, compared to 0.4 for a standard ISO container
- Loose bulk must be contained without leakage



GLOBAL EXPERTISE WITH LOCAL KNOWLEDGE. FOR DETAILED SPECIFICATIONS OF OUR PRODUCT OFFERING AND TO DISCUSS OUR FLEXIBLE LEASING SOLUTIONS, PLEASE CONTACT YOUR REGIONAL SEACO LEASING REPRESENTATIVE, VISIT: [SEACOGLOBAL.COM/CONTACT-US/CONTAINER-LEASING](https://seacoglobal.com/contact-us/container-leasing)

LEASING & ONE WAY MOVE:

NSW Evette Murray

☎ (+61) 2 9290 1455

✉ Evette.murray@seacoglobal.com

QLD Ben Lowry

☎ (+61) 7 3130 6060

✉ Ben.lowry@seacoglobal.com

SALES:

NSW & QLD Steven McInerney

☎ (+61) 7 3130 6062

✉ Steven.mcinerney@seacoglobal.com

LEASING, ONE WAY MOVE & SALES:

VIC & WA Mitch Furness

☎ (+61) 8 9441 4838

✉ Mitch.furness@seacoglobal.com