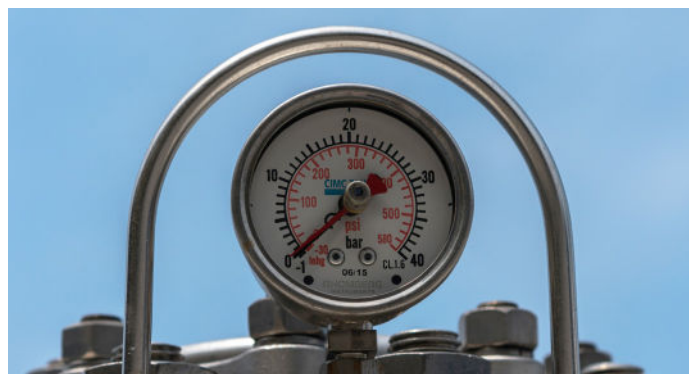


# T50 GAS TANK CONTAINERS

## 24,600 LITRE (22 BAR & 27.5 BAR)

## 24,300 LITRE (34.4 BAR)

DESIGNED FOR THE INTERMODAL CARRIAGE OF LIQUEFIED GASES



## TECHNICAL SPECIFICATIONS\*

<b>CAPACITY</b>	22.0 bar with 24,600 litre / 6,499 U.S. gallon		
	27.5 bar with 24,600 litre / 6,499 U.S. gallon		
	34.4 bar with 24,300 litre / 6,419 U.S. gallon		
<b>FRAME DIMENSIONS</b>	<b>LENGTH:</b> 20 ft (6,058 mm)		
	<b>WIDTH:</b> 8 ft (2,438 mm)		
	<b>HEIGHT:</b> 8 ft 6 ins (2,591 mm)		
<b>WEIGHT</b>	<b>MAXIMUM GROSS</b>	<b>TARE</b>	<b>PAYLOAD</b>
22.0 Bar	36,000 kg (79,366 lbs)	7,100 kg (15,653 lbs)	28,900 kg (63,713 lbs)
27.5 Bar	36,000 kg (79,366 lbs)	7,650 kg (16,865 lbs)	28,350 kg (62,501 lbs)
34.4 Bar	36,000 kg (79,366 lbs)	8,800kg (19,400 lbs)	27,200 kg (59,966 lbs)
Working Pressure	22.0 bar / 319 psi	27.5 bar / 399 psi	34.4 bar / 499 psi
Test Pressure	29.9 bar / 433 psi	35.75 bar / 518 psi	44.72 bar / 648 psi
Design Temperature	55° C / 131° F	55° C / 131° F	50° C / 122° F

## GENERAL SPECIFICATIONS

<b>SHELL MATERIAL</b>	Carbon steel (P460NL) with zinc coating
<b>BARREL THICKNESS</b>	13.4mm
<b>DESIGN CODE</b>	ASME VIII Division 2 - Stamp U2, with dual pressure calculation
<b>EARTH CONNECTION / GROUNDING</b>	One stainless steel lug on rear of tank frame
<b>MANLID</b>	Tongue and groove type. 500 mm / 20 inch diameter, bolted closures (20)
<b>LIQUID PHASE VALVE</b>	Stainless steel, 50 mm / 2 inch diameter, ball valve with ACME coupling 3¼ inch and cap closure.
<b>GAS PHASE VALVE</b>	Stainless steel, 50mm / 2 inch diameter, ball valve with ACME coupling 1¾ inch and cap closure.
<b>SUNSHINE</b>	Aluminium construction, fastened with strips
<b>VALVE CABINET</b>	Stainless steel bottom cabinet with aluminium door
<b>BAFFLES</b>	Optional
<b>SAFETY RELIEF VALVE</b>	80 mm / 3 inch diameter device set at working pressure. Rupture disc & pressure gauge fitted.
<b>THERMOMETER</b>	Fitted with NPT thread. Reading -60° C to 100° C
<b>GASKET</b>	PTFE

### REGULATORY APPROVALS

Seaco tank containers meet global regulatory approvals for international transport.

### SPECIFICATION OPTIONS:

A full range of optional features are available and can be tailored to meet customer requirements. E.g. baffle, lining, alternate valve configuration, etc.

\* All specification details are based on the average T50 Tank in the Seaco fleet. Specifications may vary subject to Tank type selected.

For further technical enquiries, please contact your local Seaco tank specialist.

Visit: [seacoglobal.com/contact-us/tank-enquiries](https://www.seacoglobal.com/contact-us/tank-enquiries)

[www.seacoglobal.com](https://www.seacoglobal.com)